

DANA J. STANDLEY, P.L.S. DATE 11-8-16

# LITTLETON TOWN LIBRARY TOPOGRAPHIC PLAN

SHATTUCK STREET  
IN  
LITTLETON MASSACHUSETTS  
(MIDDLESEX COUNTY)  
EXISTING CONDITIONS  
NOVEMBER 3, 2016

REV. NO.	DATE	DESC.

PREPARED FOR:  
TOWN OF LITTLETON  
REUBEN HOAR LIBRARY  
41 SHATTUCK STREET  
LITTLETON, MA 01460

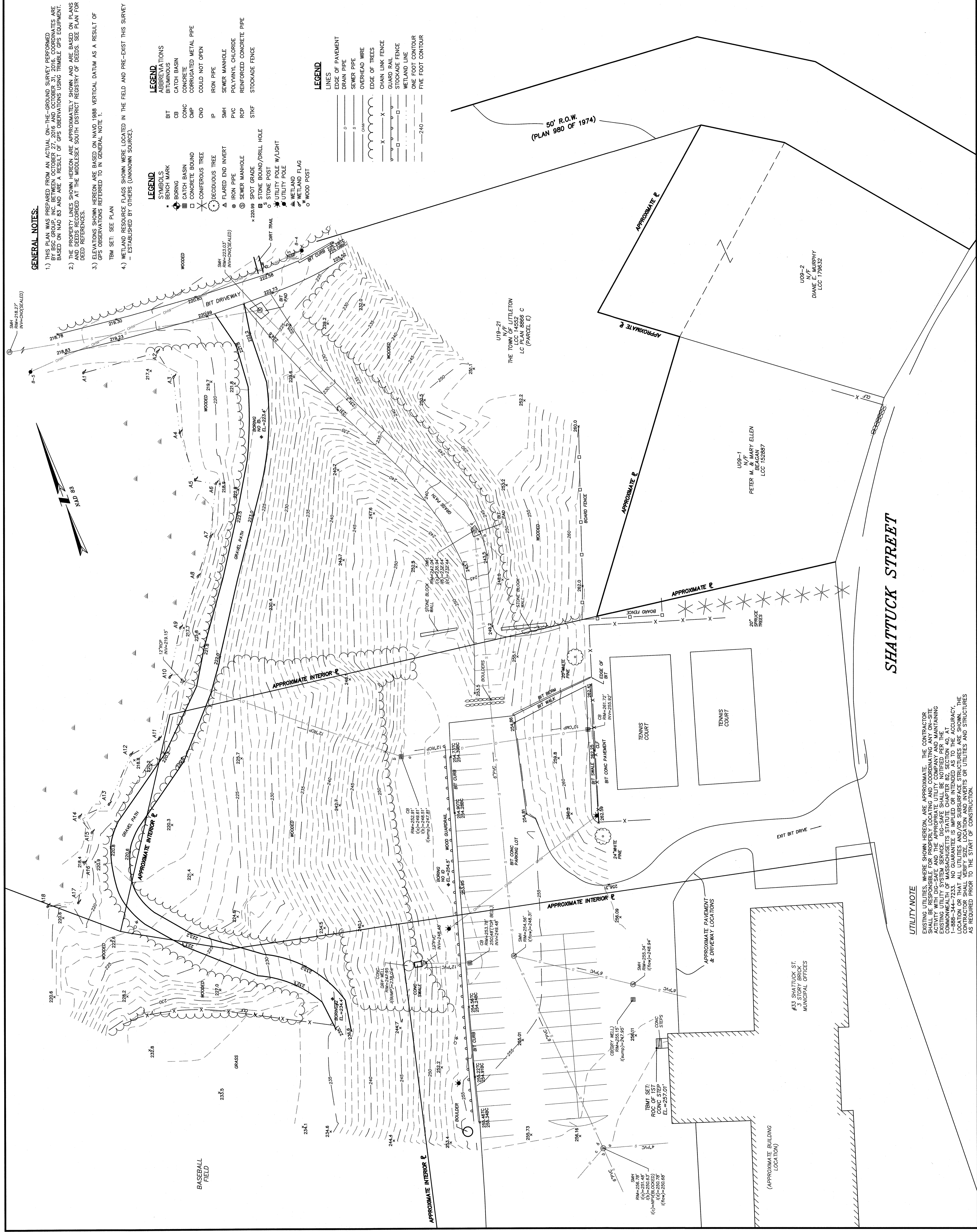
**BSC GROUP**  
33 Waldo Street  
Worcester, Massachusetts  
01605 508.792.4500

© 2016 The BSC Group, Inc.  
SCALE: 1" = 20'  
0 10 20 40 feet  
FILE: \6837300\DWG\B537300E.DWG  
JOB: NO. 8-5373.00 SHEET 1 OF 1

**GENERAL NOTES:**

- THIS PLAN WAS PREPARED FROM AN ACTUAL ON-THE-GROUND SURVEY PERFORMED BY BSC GROUP, INC. BETWEEN OCTOBER 27, 2016 AND OCTOBER 31, 2016. COORDINATES ARE BASED ON NAD 83 AND ARE A RESULT OF GPS OBSERVATIONS USING TRIMBLE GPS EQUIPMENT.
- THE PROPERTY LINES SHOWN HEREON ARE APPROXIMATELY SHOWN AND ARE BASED ON PLANS AND DEEDS RECORDED AT THE MIDDLESEX SOUTH DISTRICT REGISTRY OF DEEDS. SEE PLAN FOR DEED REFERENCES.
- ELEVATIONS SHOWN HEREON ARE BASED ON NAVD 1988 VERTICAL DATUM AS A RESULT OF GPS OBSERVATIONS REFERRED TO IN GENERAL NOTE 1.
- TBM SET: SEE PLAN
- WETLAND RESOURCE FLAGS SHOWN WERE LOCATED IN THE FIELD AND PRE-EXIST THIS SURVEY - ESTABLISHED BY OTHERS (UNKNOWN SOURCE).

- LEGEND**
- SYMBOLS**
- BENCH MARK
  - BORING
  - CATCH BASIN
  - CONCRETE BOUND
  - CONIFEROUS TREE
  - DECIDUOUS TREE
  - FLARED END INVERT
  - IRON PIPE
  - SEWER MANHOLE
  - SPOT GRADE
  - STONE BOUND/DRILL HOLE
  - STONE POST
  - UTILITY POLE W/LIGHT
  - UTILITY POLE
  - WETLAND FLAG
  - WOOD POST
- LEGEND**
- ABBREVIATIONS**
- BIT BITUMINOUS
  - CB CATCH BASIN
  - CONC CONCRETE
  - CMP CORRUGATED METAL PIPE
  - CNO COULD NOT OPEN
  - IP IRON PIPE
  - SMH SEWER MANHOLE
  - PVC POLYVINYL CHLORIDE
  - RCP REINFORCED CONCRETE PIPE
  - STKF STOCKADE FENCE
- LEGEND**
- LINE**
- EDGE OF PAVEMENT
  - DRAIN PIPE
  - SEWER PIPE
  - OVERHEAD WIRE
  - EDGE OF TREES
  - CHAIN LINK FENCE
  - GUARD RAIL
  - STOCKADE FENCE
  - WETLAND LINE
  - ONE FOOT CONTOUR
  - FIVE FOOT CONTOUR



**UTILITY NOTE**

EXISTING UTILITIES, WHERE SHOWN HEREON, ARE APPROXIMATE. THE CONTRACTOR SHALL BE RESPONSIBLE FOR PROPERLY LOCATING AND COORDINATING ANY ON-SITE UTILITIES. THE CONTRACTOR SHALL BE RESPONSIBLE FOR MAINTAINING EXISTING UTILITY SYSTEM SERVICE. DIG-SAFE SHALL BE NOTIFIED PER THE COMMONWEALTH OF MASSACHUSETTS STATUTE CHAPTER 82, SECTION 40, AT 1-888-344-7233. NO GUARANTEE IS IMPLIED OR INTENDED AS TO THE ACCURACY OF THE UTILITIES SHOWN HEREON. THE CONTRACTOR SHALL VERIFY SIZE, LOCATION AND INVERTS OR UTILITIES AND STRUCTURES AS REQUIRED PRIOR TO THE START OF CONSTRUCTION.